

SPECIFICATION & APPROVALS

CUSTOMER:

PowerConnections P/N: PC8338 LT
DESCRIPTION: Euro Converter Plug

DATE: 25 Jun 2019
Revision: E

Submission Sample Quantity: 10 Pieces

Uncontrolled when Copied or Printed

SPECIFICATION & APPROVALS
SUPPLIER SPECIFICATION SUBMISSION

Date of Application 25 Jun 2019 Specification No. 700-0003

Supplier's Name PowerConnections Supplier Code Part No. PC8338 **LT**

Part Name Euro **Converter Plug**

Tick the relevant box "✓"

Reason for Submission

- 1. New application
- 2. New part(s) is added to accepted specification
- 3. Revision of accepted specification

(Revision requested by customer Or supplier)

Revision / Change

- 1. The specification attached to this sheet does not deviate from the customer specification
- 2. Revision(s) within the limits of customer specification is proposed. Revision proposal(s) listed below.
- 3. Revision(s) beyond the limits of customer specification is proposed. Revision proposal(s) listed below. However, all other items contained within the specification are identical to the customer specification.

Revision(s) shall be marked with a triangle "Δ" in the specification attached.

Revision No.	Date	Revision Description	Reason for Revision
A	29-03-07	First issue	
B	10-05-10	Revised to BS 1363-5	Change of applicable Standard
C	31-08-10	Bussman Fuse Revision	Change to fuse markings
D	22-05-12	Marking, Material changed	Use Brass clips
E	21-06-2019	Change fuse details to SEM only, change to markings. Dimensional drawing added, certificate details added	Change of fuse supplier, change to RoHS & WEEE regulations Scope, certification details and drawings missing.

Checked By

--	--	--	--	--

Approved By

Paul Allen

Table of Contents

Section	Description	Page
1.0	Application	4
2.0	Name/Part Number	4
3.0	Shape and Dimensions	4
4.0	Rating	4
5.0	Safety Specifications – Approvals	4
6.0	Electrical Strength Test	5
7.0	Mechanical Strength Tests	6
8.0	Construction Tests	7
9.0	Glow Wire Tests	7
10.0	Material Strength Tests	8
11.0	Component Name	9
12.0	Fuse Specification	10
13.0	Installation Procedure	11
14.0	Packing Method	12
15.0	Dimensional Drawing and Markings	13

Uncontrolled when Copied or Printed

PowerConnections		THIS DOCUMENT CONTAINS INFORMATION WHICH IS PROPRIETRY TO POWERCONNECTIONS AND SHOULD NOT BE USED WITHOUT WRITTEN PERMISSION		
TITLE	Euro Converter Plug	DRAWN BY	CHECKED BY	APPROVED BY
Part No. PC8338 LT	SPECIFICATION NO. 700-0003			<i>Paul M. ...</i>
REVISION E				

SPECIFICATION & APPROVALS

1.0 Application

This Specification defines the performance for the Euro^Δ Converter Plug, which is designed for the Euro Plug (CEE7).

2.0 Name/Part Number

Name: Euro Converter Plug^Δ

Part Number: PC8338

3.0 Shape and Dimensions

See Below (Section 15)^Δ

4.0 Rating

Voltage: AC 250 V~ 50 Hz

Current: 8 A

Ambient Working Temperature: -5 to +70 °C

Storage Temperature: -40 to +80 °C 90% RH

5.0 Safety Specifications – Approvals

Plug: BSI Kitemark Licence No. KM 52467

Fuse: ASTA Diamond Mark Licence No. 500


Standards

Plug: BS 5733 & Part of BS 1363-1

Fuse: BS1362

For BSI Kite Mark Licence validation visit <https://www.bsigroup.com/en-GB/Product-Directory/>

For ASTA Diamond Mark Validation visit <http://www.astabeab.com/buyers-by-number.asp>

PowerConnections		THIS DOCUMENT CONTAINS INFORMATION WHICH IS PROPRIETRY TO POWERCONNECTIONS AND SHOULD NOT BE USED WITHOUT WRITTEN PERMISSION		
TITLE	Euro Converter Plug	DRAWN BY	CHECKED BY	APPROVED BY
Part No. PC8338 LT				
	SPECIFICATION NO. 700-0003			
	REVISION E			

6.0 Electrical Strength Test

No.	Test	Clause in Standard	Result	Description of test 6 pieces are subjected to this series of test
6.1	Provision for cables and Cords	19.1 BS1363-5	Pass	A CEE7 Euro Plug is fitted into a PC 8338 and the CEE7cord is subjected to 25 pulls lasting is with a force of 30N, no more than 2mm of displacement is allowed. The cord is then subjected to the pulling force and at 3750v to ensure no breakdown in connection.
6.2	Resistance to ageing	14.2 BS1363-5	Pass	Samples to be kept in a cabinet for 7 days (168 hours) at 70°C±2°C, then tested for stickiness or greasiness by with dry rough cloth wrapped around a fore-finger, force 5N.
6.3	Insulation Resistance	15.1 BS 1363-5	Pass	500V DC is applied and after 60s the insulation resistance is checked and must be not less than: a) 5MΩ between parts of opposite polarity, b) 5MΩ between parts of opposite polarity connected together and other insulated parts including the earth.
6.4	Electric Strength	15.2 BS1363-5	Pass	2000V AC 50Hz is applied and after 60s the Voltage drop is checked and must be within 3% RMS of the applied Voltage: a) between live parts of opposite polarity b) between live parts of opposite polarity connected together and other insulated parts including the earth.

PowerConnections		THIS DOCUMENT CONTAINS INFORMATION WHICH IS PROPRIETRY TO POWERCONNECTIONS AND SHOULD NOT BE USED WITHOUT WRITTEN PERMISSION		
TITLE	Euro Converter Plug	DRAWN BY	CHECKED BY	APPROVED BY
Part No. PC8338 LT	SPECIFICATION NO. 700-0003			<i>Paul M... ..</i>
REVISION E				

SPECIFICATION & APPROVALS

7.0 Mechanical Strength Tests

No.	Test	Clause in Standard	Result	Description of test 4 pieces are subjected to this series of tests
7.1	Tumble Barrel test	20.2 BS1363-5	Pass	The product is subjected singly to 1000-drop test in the apparatus as shown in the (BS1363-5) standard Figure 17.
7.2	Fuse insertion test	20.3.1 BS1363-5	Pass	A solid stainless steel fuse link is inserted 20 times, to test the strength of the clips.
7.3	Temperature rise test	16 BS1363-5	Pass	Current of 8.8 amps is passed for not less than 4 hours and not greater than 8 hours at 250 volts or until stable, the temperature rise is then measured
7.3.1	Box Ambient	For each sample		21.8 °C, 22.1 °C, 22.1 °C
7.3.2	Line Pin Spacer temp rise	For each sample		16.0K, 15.9K, 15.6K max. temp rise permissible 37K
7.3.3	Neutral Pin Spacer temp rise	For each sample		13.5K, 12.8K, 12.7K max. temp rise permissible 37K
7.3.4	Accessible external surface temp rise	For each sample		10.2K, 9.7K, 12.0K max. temp rise permissible 52K

PowerConnections		THIS DOCUMENT CONTAINS INFORMATION WHICH IS PROPRIETRY TO POWERCONNECTIONS AND SHOULD NOT BE USED WITHOUT WRITTEN PERMISSION		
TITLE	Euro Converter Plug	DRAWN BY	CHECKED BY	APPROVED BY
Part No. PC8338 LT	SPECIFICATION NO. 700-0003			<i>Paul M. Jones</i>
REVISION E				

SPECIFICATION & APPROVALS

8.0 Construction Tests

No.	Test	Clause in Standard	Result	Description of test 3 pieces are subjected to this series of tests
8.1	Accessibility to live parts	9.1 BS1363-5	Pass	With the unit assembled as in normal use a probe 12 to BS EN 61032:1998 is supplied with a force of 5N whilst a voltage of 45V is supplied to the live parts via an electrical indicator. No access permissible.
8.2	Lid to Base security	12.5 BS1363-5	Pass	With the parts at 70°C±5° C a force of 60N is applied to the cover fixing screw, no damage or impairment of function to have occurred.
8.3	Resistance to Heat	22.2 BS1363-5	Pass	With the parts at 70°C±5° C a force of 20N is applied to the plug in the jaws of the apparatus shown in Figure 23, no damage or impairment of function to have occurred, shown by re-testing insulation resistance and electric strength, and must fit the Figure 5 gauge.
8.4	Resistance to Heat	22.3 BS1363-5	Pass	Ball pressure test using the apparatus shown in Figure 24, test temperature at 75°C±5° C, the force of 20N is applied for 60 mins after an initial period of 10 mins. The sample is then cooled by immersion in water at room temp and the indentation caused by the ball measured, this must be less than 2mm in diameter.

9.0 Glow Wire Tests

No.	Test	Clause in Standard	Result	Description of test 3 pieces are subjected to this series of tests
9.1	Resistance to Abnormal Heat	23.2 BS1363-5	Pass	A glow wire of 750°C is applied to all the insulating surfaces there must be no visible flames or glowing or these must extinguish within 30s of removal of the glow wire.

PowerConnections		THIS DOCUMENT CONTAINS INFORMATION WHICH IS PROPRIETARY TO POWERCONNECTIONS AND SHOULD NOT BE USED WITHOUT WRITTEN PERMISSION		
TITLE	Euro Converter Plug	DRAWN BY	CHECKED BY	APPROVED BY
Part No. PC8338 LT	SPECIFICATION NO. 700-0003			<i>Paul M... ..</i>
REVISION E				

SPECIFICATION & APPROVALS

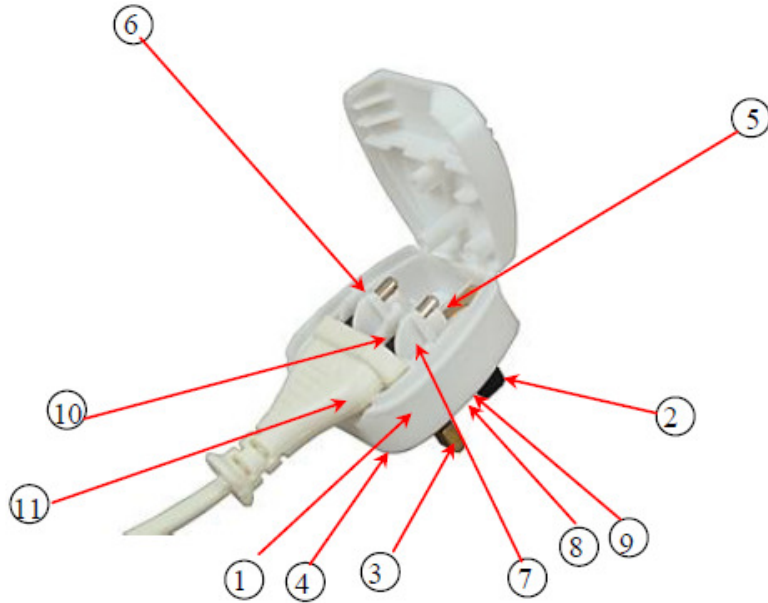
10.0 Material Strength Tests

No.	Test	Clause in Standard	Result	Description of test 3 pieces are subjected to this series of tests
10.1	Construction of plug	12.2 BS1363-5	Pass	Critical dimensions of the plug must not exceed the dimensions given in Figure 4a. Compliance checked using the gauge as shown in Figure 5.
10.2	Flexibility of pins	12.8.11 BS1363-5	Pass	Using the apparatus as shown in Figure 8 pins are tested with force of 4.2 to 4.4N applied 25mm from the engagement face, the pins must not deflect by more than 3°30'. The results on the pins were <1°. After this test the parts are again checked again checked using the Figure 5 gauge.

Uncontrolled when Copied

PowerConnections		THIS DOCUMENT CONTAINS INFORMATION WHICH IS PROPRIETRY TO POWERCONNECTIONS AND SHOULD NOT BE USED WITHOUT WRITTEN PERMISSION		
TITLE	Euro Converter Plug	DRAWN BY	CHECKED BY	APPROVED BY
Part No. PC8338 LT	SPECIFICATION NO. 700-0003			<i>Paul M...</i>
REVISION E				

11.0 Component Name



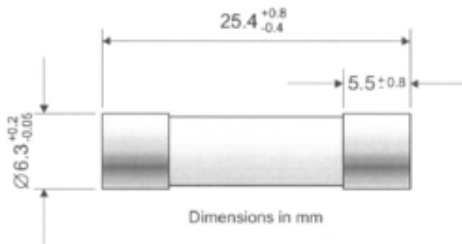
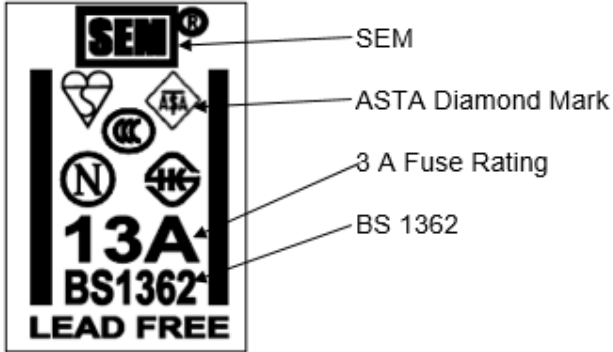
No.	Test	Material
1	Base + Cover (one piece)	Polypropylene LG Lupol GP1007 FC
2	Earth Pin	Nylon 66 30% Glass Filled – Rhodia A30H2V25
3	Live Pin	Hard Brass (Luen Hop) with Nylon 66 Sleeve Dow 21SPC
4	Neutral Pin	Hard Brass (Luen Hop) with Nylon 66 Sleeve Dow 21SPC
5	Live Clip, Fuse clip	Hard Brass Luen Hop
6	Neutral Clip	Hard Brass Luen Hop
7	Insert	Polypropylene LG Lupol GP1007 FC
8	Fuse Holder	Nylon 66, Dow 21SPC
9	Fuse	△ AsiaFuse 3A, 5A, 10A, 13A (ASTA Diamond Mark 974)
10	Screw	Plain or Tamperproof Steel Screw with Zinc and Clear Pacification -Luen Tai
11	CEE7 Plug	

PowerConnections		THIS DOCUMENT CONTAINS INFORMATION WHICH IS PROPRIETRY TO POWERCONNECTIONS AND SHOULD NOT BE USED WITHOUT WRITTEN PERMISSION		
TITLE	Euro Converter Plug	DRAWN BY	CHECKED BY	APPROVED BY
Part No. PC8338 LT	SPECIFICATION NO. 700-0003			<i>Paul M...</i>
REVISION E				

12.0 Fuse Specification

SEM (Group Talents Ltd)

Marking



Copied or Printed

Designation:

- 1 A - SEM 11-01A
- 2 A - SEM 11-02A
- 3 A - SEM 11-03A & SEM 12-03A
- 5 A - SEM 11-05A & SEM 12-05A
- 7 A - SEM 11-07A
- 10 A - SEM 11-10A & SEM 12-10A
- 13 A - SEM 11-13A & SEM 12-13A

Rating

240 V.a.c. 50 Hz, 1, 2, 3, 5, 7, 10, 13 Amperes

Breaking Capacity

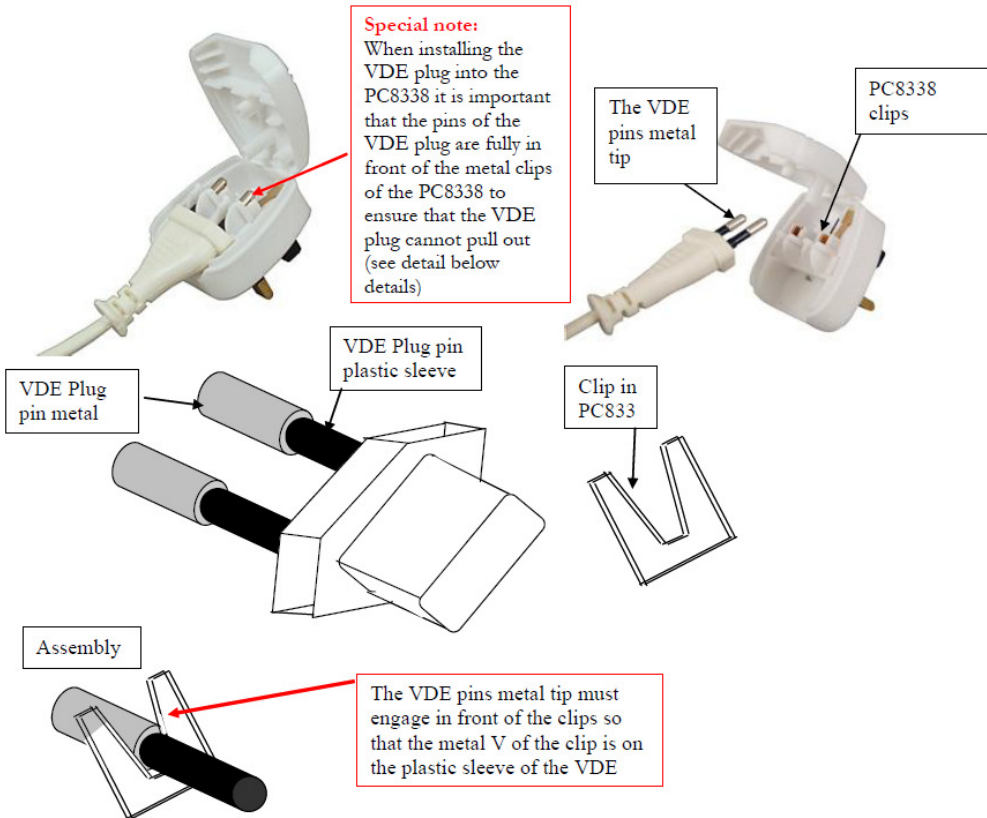
6 kA r.m.s

Rated Power loss

Less than 1 Watt

PowerConnections		THIS DOCUMENT CONTAINS INFORMATION WHICH IS PROPRIETRY TO POWERCONNECTIONS AND SHOULD NOT BE USED WITHOUT WRITTEN PERMISSION		
TITLE	Euro Converter Plug	DRAWN BY	CHECKED BY	APPROVED BY
Part No. PC8338 LT	SPECIFICATION NO. 700-0003			<i>Paul M...</i>
REVISION E				

13.0 Installation Procedure



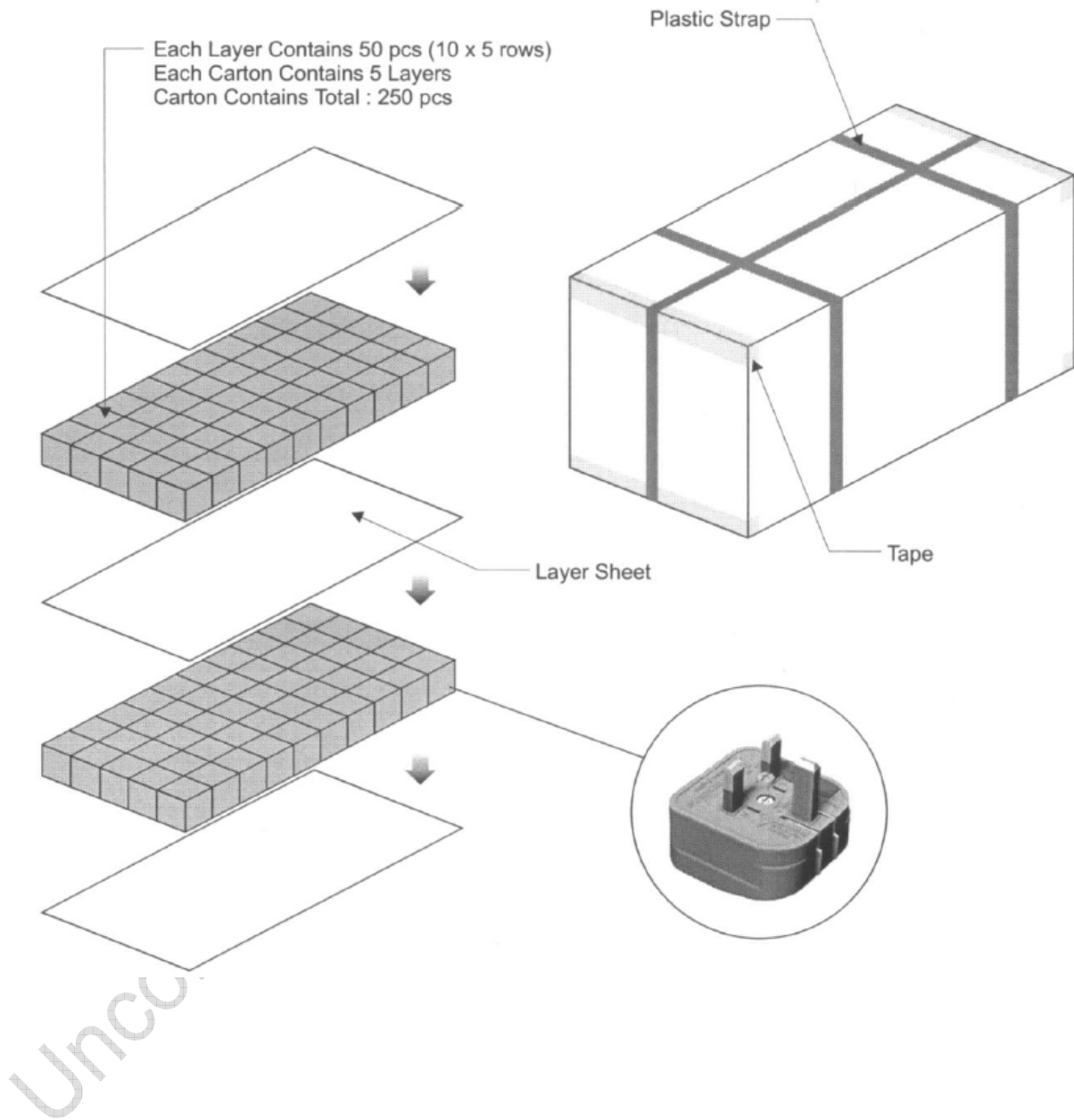
Once the VDE plug is correctly fitted close the cover and tighten the screw



Form 577 It

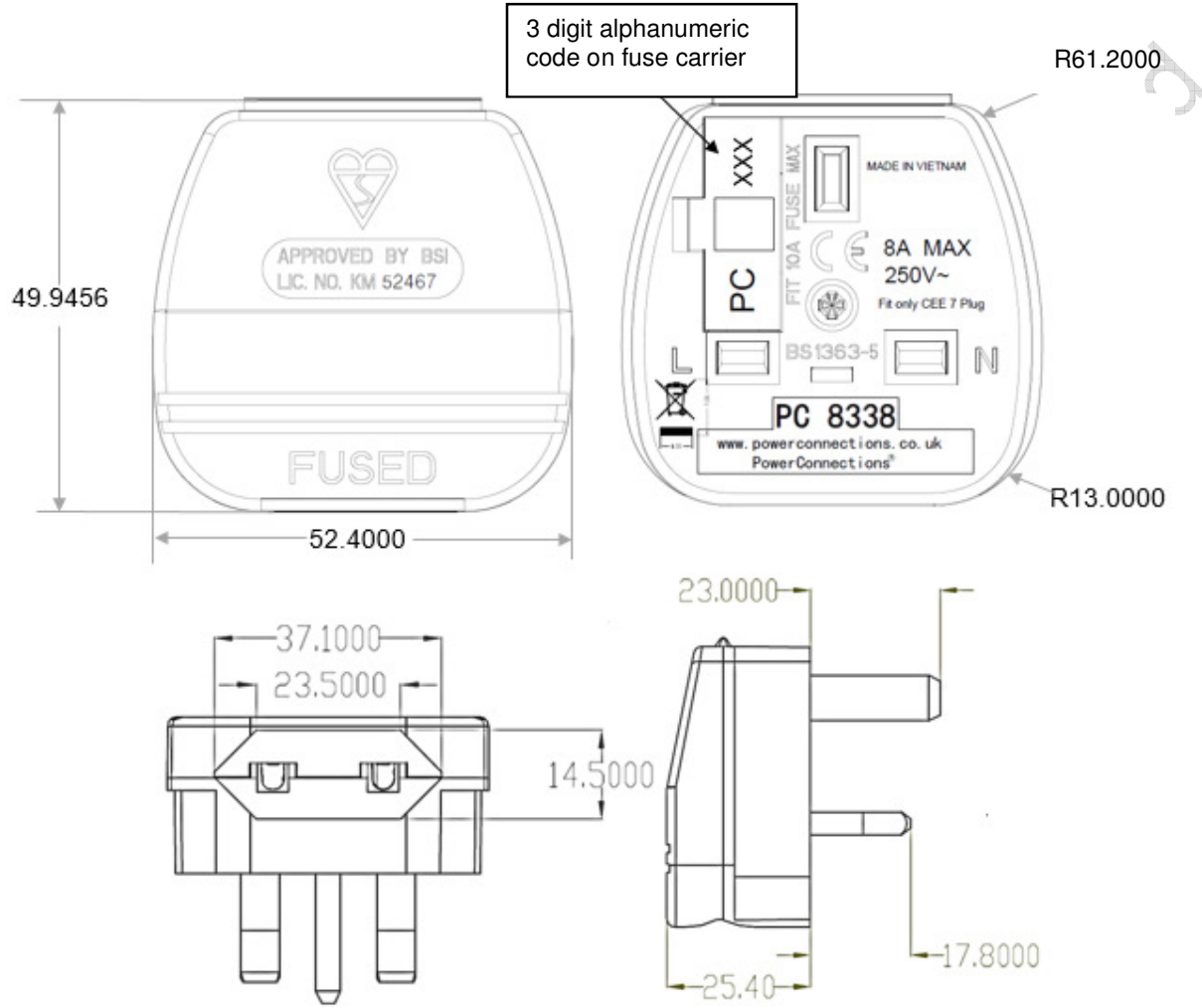
PowerConnections		THIS DOCUMENT CONTAINS INFORMATION WHICH IS PROPRIETARY TO POWERCONNECTIONS AND SHOULD NOT BE USED WITHOUT WRITTEN PERMISSION		
TITLE	Euro Converter Plug	DRAWN BY	CHECKED BY	APPROVED BY
Part No. PC8338 LT	SPECIFICATION NO. 700-0003			<i>Paul M...</i>
REVISION E				

14.0 Packing Method



PowerConnections		THIS DOCUMENT CONTAINS INFORMATION WHICH IS PROPRIETRY TO POWERCONNECTIONS AND SHOULD NOT BE USED WITHOUT WRITTEN PERMISSION		
TITLE	Euro Converter Plug	DRAWN BY	CHECKED BY	APPROVED BY
Part No. PC8338 LT	SPECIFICATION NO. 700-0003			<i>Paul M. ...</i>
	REVISION E			

15.0 Dimensional Drawing and Markings Δ



PowerConnections		DO NOT SCALE FROM DRAWING Unless otherwise stated dimensions are mm	
TITLE	Euro Converter Plug	.X	± 0.4
Part No. PC8338 LT	SPECIFICATION NO. 700-0003	.xx	± 0.1
REVISION E		ANG	± 1/2°
THIS DOCUMENT CONTAINS INFORMATION WHICH IS PROPRIETRY TO POWERCONNECTIONS AND SHOULD NOT BE USED WITHOUT WRITTEN PERMISSION		DRAWN BY	CHECKED BY
		APPROVED BY <i>Paul M. Jones</i>	